

SAFESTART

ENVIRONMENTAL

INDOOR ENVIRONMENTAL REPORT

NAME	Adams County Courthouse
PROPERTY ADDRESS	521 Vermont St Quincy, IL 62301
DATE OF INVESTIGATION	April 18, 19, 20, 2023
PREPARED BY:	Larry Schwartz
INVESTIGATED BY:	Safestart Environmental
TYPE OF INVESTIGATION	We performed a mold investigation at the above property.
CONCEPT & METHODOLOGY	The following identifies industry-recognized organizations, best practices & guidelines regarding the approach and collection of mold samples. These items are incorporated into Safestart Environmental methodologies and the performed visual assessment.
Industry-Recognized Organizations / Best Practices & Guidelines	<ul style="list-style-type: none">● Indoor Air Quality Association (www.IAQA.org)● Indoor Environmental Standards Organization (www.iestandards.org)● IICRC S520-Standard and Reference Guide for Professional Mold Remediation (www.iicrc.org)
TESTS PERFORMED BY	Safestart Environmental
SUMMARY	<p><u>Methods of Testing and Assessment:</u></p> <p>On each level of the building, we utilized four Safestart Environmental investigators to perform observations and testing in each identified area listed below. The following were performed:</p> <ul style="list-style-type: none">● A sample collection of dust for qPCR testing off of surfaces of walls and content● A sample collection of dust for qPCR testing off of HVAC supply vents● Spore trap air tests● Tape lifts or swab samples of materials suggestive of microbial growth <p>Additionally, we performed visual observations for both current and past signs of water damage.</p>

Testing Outcome:

In assessing the degree of environmental concerns relative to microbial growth in each area, we reviewed and analyzed the results of the above listed tests, along with the visual information, particle densities and questionnaire data. From this, we identified each test type results as being acceptable, potentially harmful or unacceptable relative to recommended thresholds. These results are correlated by a color coded map, included in the attachments sent with this report.

Red: Unacceptable

Orange: Near Unacceptable

Yellow: Potentially Unacceptable

Green: Acceptable

Blue: Active Moisture

**Because there isn't a way to determine everyone's levels of sensitivities, one should consider only Acceptable levels as safe*

Summary:

Ground Floor Overall Results: Unacceptable, *Active Moisture detected in sub-basement/boiler room

1st Floor Overall Results: Unacceptable

2nd Floor Overall Results: Unacceptable, *Active Moisture detected on the East wall of Courtroom 2B

3rd Floor Overall Results: Unacceptable

4th Floor Overall Results: Unacceptable

On all levels of the courthouse, there was a presence of hydrophilic mold species (that require high moisture levels on food sources to grow) such as *Stachybotrys*, *Chaetomium* and species of *Aspergillus*. These are all considered as more virulent on health effects and are indicative of continuous high levels of moisture and water in the environment. We additionally observed high levels of rust on metal surfaces, as noted in our observations below. This also is indicative of high levels of moisture and water in the indoor environment.

The testing results that were sent to laboratories provides information of both current and historic water and moisture damage in the building. See the reports attached.

Observations inside air handlers and supply and return plenums, which were accessible during our investigation, indicate some have interior insulation. Interior insulation in ductwork where there is high humidity is virtually always contaminated with microbial growth. Additionally, the visible condition of ductwork, and junctions of the ductwork, indicate a lack of cleaning and maintenance. Consider that the ductwork system is a transportation system moving air from one location to another. Specifically, the location of some air handlers are not on the same level of the building where the air is being transported to.

We recommend a review of all photos, laboratories and notes to fully understand the assessment provided.

******* MISC (Questionnaire Data) - *The number of respondents in this survey is not representative of the total number of employees in the building. *******

CONCLUSION

The results of our mold investigation indicate a correlation between the health effects of the occupants, as indicated in the questionnaires returned to us, elevated levels of microbial organisms per our test results and visual observations. **It is our professional opinion that the building in its current condition has elevated microbial organisms above recommended thresholds.**

GROUND LEVEL	ROOM	PARTICLE DENSITIES-measured at 0.3 micron	FUNGI-10 SURFACES	FUNGI-10 SUPPLY VENT	AIR SAMPLE	SWAB/TAPE	MISC (Questionnaire Data)	
	County Clerk's Office (G-A)(G-F)(G-H)	5,940 Outdoor level: 4230	Potentially Unacceptable - Many molds at the tipping point	Acceptable -	Potentially Unacceptable - Slight elevation of Aspergillus/Penicillium	Acceptable -	Number of Individuals with Health Effects: 24	
		PHOTOS:	County Clerk's Office Photos					
		VISUALS:	<ul style="list-style-type: none"> • The space has carpet tiles on the floor. • Office appears to have lots of movement and traffic • Scented dryer sheet in supply vent at office south entrance. • Tape on supply vent perimeter, unusually placed. • Office occupant stated while we were in the office that dust dirt falls on her desk regularly from the vent. • Window has lots of caulking and the laminated sill is bowed from water events. • Random staining on ceiling tiles throughout the space. • There is a stand alone air purifier running in this office. • No thermal imaging anomalies at the time of our investigation. 					

GROUND LEVEL	ROOM	PARTICLE DENSITIES-measured at 0.3 micron	FUNGI-10 SURFACES	FUNGI-10 SUPPLY VENT	AIR SAMPLE	SWAB/TAPE	MISC (Questionnaire Data)
	Assessments Office (G-C) (G-K)	5,940 Outdoor level: 4230	Unacceptable - Elevated mycotoxin levels	Potentially Unacceptable - One elevated mycotoxin in the sample	Potentially Unacceptable -	Unacceptable - Presence of Chaetomium and Aspergillus/Penicillium	Number of Individuals with Health Effects: 4
		PHOTOS:	Assessment Office Photos				

		VISUALS:	<ul style="list-style-type: none"> • Old blue carpeting. Vents have a lot of dark stains • Mold on the fridge located on the North side of the office, near the microwave. • Ceiling tile near microwave looks almost wet • Lots of staining in office near fridge • East side window has dark spotting on caulking • Tape test done on microwave • Tape test done on records in room near microwave. • Moisture meter and thermal imaging performed on the ceiling tile above the microwave area - no active moisture at the time of our investigation. • No thermal imaging anomalies at the time of our investigation. 				
--	--	-----------------	--	--	--	--	--

GROUND LEVEL	ROOM	PARTICLE DENSITIES	FUNGI-10 SURFACES	FUNGI-10 SUPPLY VENT	AIR SAMPLE	SWAB/TAPE	MISC (Questionnaire Data)
	Treasurer's Office (G-D) (G-L)	5,940 Outdoor level: 4230	Unacceptable ▾ Elevated mycotoxin levels	Acceptable ▾	Acceptable ▾	N/A ▾	Number of Individuals with Health Effects: 4
		PHOTOS:	Treasurer's Office				
		VISUALS:	<ul style="list-style-type: none"> • 2 windows on the West wall. Questionnaire input states that one window area leaks several times a year causing water seepage onto the carpeting during heavy rains and carpet remains wet for days. • Includes 2 offices, 1 vault room. • An inDeputy treasurer supply vent had a leak within last year that led to ceiling staining. Resident mentioned this while there. • The treasurer's office has cove base trim separating from the wall. We peeled back a bit and observed dark staining from microbial growth. • Large air purifier running in the middle office. Even with this running, the particle densities measured were elevated from the outdoor sample. • No thermal imaging anomalies at the time of our investigation. 				

GROUND LEVEL	ROOM	PARTICLE DENSITIES	FUNGI-10 SURFACES	FUNGI-10 SUPPLY VENT	AIR SAMPLE	SWAB/TAPE	MISC (Questionnaire Data)
	Sub-Basement /Boiler Room (G-E, G-E2, 3) (G-M)	6,960 Outdoor level: 4230	Unacceptable ▾ Extremely elevated levels of Chaetomium and Stachybotrys	Acceptable ▾	Acceptable ▾	Unacceptable ▾ Elevated levels of Penicillium/Talaromyces	Number of Individuals with Health Effects: NA

		PHOTOS:	Sub-Basement /Boiler Room				
		VISUALS:	<ul style="list-style-type: none"> • Evidence room that was locked had signs of moisture and swabs were taken • Storage room holding coroner records had tremendous moisture, evidence of microbial growth on walls and cardboard boxes. • There is a lot of damaged content being stored in this space. • This area is below grade near the back entrance. 				

GROUND LEVEL	ROOM	PARTICLE DENSITIES	FUNGI-10 SURFACES	FUNGI-10 SUPPLY VENT	AIR SAMPLE	SWAB/TAPE	MISC (Questionnaire Data)
	File Room / Probation #2 (G-F, G-F-2) (G-N)	7,230 Outdoor level: 4230	Acceptable ▾	Acceptable ▾	Acceptable ▾	Unacceptable ▾ Elevated levels of Penicillium/Talaromyces	Number of Individuals with Health Effects: 0
		PHOTOS:	File Room				
		VISUALS:	<ul style="list-style-type: none"> • Hallway is VCT tile and coming into office there is brown carpet tile • Office 1 some dust on vent, no staining on ceiling, • Office 2 some dust on vent, no stains • Office 3 yellow mirrors on wall some dust on vent no stains • Office 4 clean vents no stains • Office 5 gray walls with quotes on walls, some dust on vents • Office 6 blue walls, some dust on vents • Office 7 yellow ribbon on door, dusty vent, no stains • File room - lots of manilla folders and musty smells. Swab taken from old books that looked contaminated in two spots. • No thermal imaging anomalies at the time of our investigation. 				

GROUND LEVEL	ROOM	PARTICLE DENSITIES	FUNGI-10 SURFACES	FUNGI-10 SUPPLY VENT	AIR SAMPLE	SWAB/TAPE	MISC (Questionnaire Data)
	County Board Office/IT (formerly Tax Records)(G-G) (G-O)	CBO: 4,860 IT: 4,950 Outdoor level: 4230	Unacceptable ▾ Extremely elevated levels of Stachybotrys	Acceptable ▾	Potentially Unacceptable ▾ Slight elevation of Aspergillus/Penicillium	N/A ▾	Number of Individuals with Health Effects: NA
		PHOTOS:	County Board Office				

		VISUALS:	<ul style="list-style-type: none"> • There are carpet tiles flooring throughout both spaces • The IT room has no staining on ceiling tiles, but the supply vent does have signs of microbial growth. • Some ceiling tiles were removed in the IT room. • Some staining on ceiling tiles in county board office, including outside of the supply vent • No thermal imaging anomalies at the time of our investigation. 				
--	--	-----------------	--	--	--	--	--

GROUND LEVEL	ROOM	PARTICLE DENSITIES	FUNGI-10 SURFACES	FUNGI-10 SUPPLY VENT	AIR SAMPLE	SWAB/TAPE	MISC (Questionnaire Data)	
	Back Entrance Hallway (G-Z)	6,540 Outdoor level: 4230	Unacceptable ▾ Extremely elevated levels of Chaetomium and Stachybotrys	Acceptable ▾	Acceptable ▾	N/A ▾	Number of Individuals with Health Effects: NA	
		PHOTOS:	Back Entrance Hallway					
		VISUALS:	<ul style="list-style-type: none"> • VCT tile on floor, high traffic area • Dusty vents, small minor markings on some vents • No thermal imaging anomalies at the time of our investigation. 					

GROUND LEVEL	ROOM	PARTICLE DENSITIES	FUNGI-10 SURFACES	FUNGI-10 SUPPLY VENT	AIR SAMPLE	SWAB/TAPE	MISC (Questionnaire Data)	
	911 Center (G-X)	7,620 Outdoor level: 4230	Unacceptable ▾ Elevated mycotoxin	N/A ▾	Acceptable ▾	N/A ▾	Number of Individuals with Health Effects: NA	
		PHOTOS:	911 Center					
		VISUALS:	<ul style="list-style-type: none"> • VCT tile floor. • This area is not used as primary, for backup. • Visibly dusty air vents • Stains on the ceiling in various areas. • Bathroom has signs of moisture and falling tile with pipes hanging above. • No thermal imaging anomalies at the time of our investigation. 					

GROUND LEVEL	ROOM	PARTICLE DENSITIES	FUNGI-10 SURFACES	FUNGI-10 SUPPLY VENT	AIR SAMPLE	SWAB/TAPE	MISC (Questionnaire Data)
	Maintenance (G-Y)	8,790	Unacceptable ▾	N/A ▾	Acceptable ▾	N/A ▾	Number of Individuals with Health Effects: NA
		Outdoor level: 4230	Elevations of Chaetomium				
		PHOTOS:	Maintenance				
		VISUALS:	<ul style="list-style-type: none"> • Concrete flooring that's painted • Open ceilings. Disconnected air duct on south wall ceiling. • You can see the dirt/dust coming out of the vents, see pictures. • Overall dusty but a maintenance shop. • No thermal imaging anomalies at the time of our investigation. 				

GROUND LEVEL	ROOM	PARTICLE DENSITIES	FUNGI-10 SURFACES	FUNGI-10 SUPPLY VENT	AIR SAMPLE	SWAB/TAPE	MISC (Questionnaire Data)
	PROBATION OFFICES (G-B)(G-J)	5,550	Unacceptable ▾	Acceptable ▾	Acceptable ▾	N/A ▾	Number of Individuals with Health Effects: 18
		Outdoor level: 4230	Elevated levels of Stachybotrys				
		PHOTOS:	Probation Offices				
		VISUALS:	<ul style="list-style-type: none"> • VCT tiles in hallway, carpet in offices • Office 1 flowers on walls , carpeting one stain on ceiling vent doesn't look too dusty • Office 2 fish on the wall, carpeting and fan going in the room. Not too dusty • Office 3 yellow ribbon on wall, carpeting stains on wall and dusty vent. • Office 4 trees on wallpaper, carpeting dusty vent • Office 5 cactus carpeting, small stain on ceiling and dusty vent • Office 6 holding flag pic carpeting dusty vent is all • Printer area dusty vent • Office 7 baseball pictures, carpet, dusty vent dust on ceiling • Office 8 Carpeting dusty vent • Office 9 round mirror dusty vent, window in office • Office 10 art on wall, carpet, dusty vent • Office 11 purple wall dusty vent • Office 12 dusty vent • Office 13 two desks carpeting, two supplies dusty 				

			<ul style="list-style-type: none"> Main office area mainly dusty vents No thermal imaging anomalies at the time of our investigation 					
FIRST FLOOR	ROOM	PARTICLE DENSITIES	FUNGI-10 SURFACES	FUNGI-10 SUPPLY VENT	AIR SAMPLE	SWAB/TAPE	MISC (Questionnaire Data)	
	STATE'S ATTORNEY OFFICE (1-A)	5,070 Outdoor level: 4230	Unacceptable - Elevated levels of Stachybotrys and Chaetomium	Unacceptable - Extreme elevations of mycotoxin	Acceptable -	N/A -	Number of Individuals with Health Effects: 15	
		PHOTOS:	State's Attorney Office					
		VISUALS:	<ul style="list-style-type: none"> The flooring in this area is carpet tile. There are visual stains on the ceiling tiles in multiple offices. There are dirty supply vents in multiple areas. No thermal imaging anomalies at the time of our investigation. 					
FIRST FLOOR		PARTICLE DENSITIES	FUNGI-10 SURFACES	FUNGI-10 SUPPLY VENT	AIR SAMPLE	SWAB/TAPE	MISC (Questionnaire Data)	
	COURT ROOM 1A (1-C)(1-K)	6,240 Outdoor level: 4230	Unacceptable - Extreme elevation of Stachybotrys	Acceptable -	Unacceptable - Extreme elevation of Aspergillus/Penicillium	N/A -	Number of Individuals with Health Effects: 11	
		PHOTOS:	Courtroom 1A					
		VISUALS:	<ul style="list-style-type: none"> Green commercial carpeting. 2 supply vents are dirty and the west supply vent looks more moldy visually. Judges chamber, green carpet tile. Super strong fragrance in the judge's chamber but we were unable to find the source. No thermal imaging anomalies at the time of our investigation. 					

FIRST FLOOR		PARTICLE DENSITIES	FUNGI-10 SURFACES	FUNGI-10 SUPPLY VENT	AIR SAMPLE	SWAB/TAPE	MISC (Questionnaire Data)	
	CIRCUIT CLERK OFFICE (1-D)	7,200 Outdoor level: 4230	Unacceptable ▾ Elevated mycotoxins	Acceptable ▾	N/A ▾ Two windows open negating the results	N/A ▾	Number of Individuals with Health Effects: 19	
		PHOTOS:	Circuit Clerk Office (1-D)					
		VISUALS:	<ul style="list-style-type: none"> Window was open on the southeast end of the office, the window was very dirty. Window was open third from left to right (east to west) and also very dirty. Office 1 of 2 (east) supply vents were dusty. The desk below a vent had high levels of visible dust on the desk surface. Office 2 of 2 (west) supply vent has visible dark staining. Ceiling tile has a water stain. Area below the supply vent is very dusty. No thermal imaging anomalies at the time of our investigation. 					
FIRST FLOOR	ROOM	PARTICLE DENSITIES	FUNGI-10 SURFACES	FUNGI-10 SUPPLY VENT	AIR SAMPLE	SWAB/TAPE	MISC (Questionnaire Data)	
	LARGER JUDGE'S OFFICE (1-E)	4,380 Outdoor level: 4230	Unacceptable ▾ Elevated levels of Chaetomium and Stachybotrys	Acceptable ▾	Potentially Unacceptable ▾ Elevations of Cladosporium	N/A ▾	Number of Individuals with Health Effects: NA	
		PHOTOS:	Larger Judge's Office (1-E)					
		VISUALS:	<ul style="list-style-type: none"> Has stains on ceiling tile on the north wall near the judge's office. Staining near the ceiling vent right outside of the judge's office. Stains on bathroom ceiling and water stains under sink. Stains on the judge's office ceiling Air purifier running in this office No thermal imaging anomalies at the time of our investigation. 					

FIRST FLOOR	ROOM	PARTICLE DENSITIES	FUNGI-10 SURFACES	FUNGI-10 SUPPLY VENT	AIR SAMPLE	SWAB/TAPE	MISC (Questionnaire Data)	
	REGIONAL SUPT OF SCHOOLS (1-F)	5,940 Outdoor level: 4230	Unacceptable ▾ Extreme elevations of mycotoxins	Unacceptable ▾ Elevations of mycotoxins	Acceptable ▾	Unacceptable ▾ Middle Office: Elevated levels of Penicillium/Talaromyces Ceiling Tile: Elevated level of Aspergillus/Penicillium	Number of Individuals with Health Effects: 1	
		PHOTOS:	Regional Supt of Schools (1-F)					
		VISUALS:	<ul style="list-style-type: none"> Commercial carpeting appears old. Has ceiling mounted air filter. Some staining near supply vent Minor staining on South ceiling tile Minor discoloration from supply vents, this area is visibly dusty Middle office supply vent appears to have microbial growth. Swab test performed on middle office Side office for testing was not available for inspection. In the side office recorder storage, we performed a tape test near the supply on the ceiling tile. No thermal imaging anomalies at the time of our investigation. 					

FIRST FLOOR	ROOM	PARTICLE DENSITIES	FUNGI-10 SURFACES	FUNGI-10 SUPPLY VENT	AIR SAMPLE	SWAB/TAPE	MISC (Questionnaire Data)	
	RECORDER'S OFFICE(1-G)	4,080 Outdoor level: 4230	Acceptable ▾	Unacceptable ▾ Extreme Elevation of Stachybotrys	Unacceptable ▾ Elevation of Aspergillus/ Penicillium and Cladosporium	N/A ▾	Number of Individuals with Health Effects: NA	
		PHOTOS:	Recorder's Office (1-G)					
		VISUALS:	<ul style="list-style-type: none"> Long office with lots of records books and Windows accesses the newest roof. Towel located inside ceiling McQuay inside on north side unit, rag appears moldy Large Air purifier located in this room There is some damage on the wall that appears to have been repaired and painted over. No thermal imaging anomalies at the time of our investigation. 					

FIRST FLOOR	ROOM	PARTICLE DENSITIES	FUNGI-10 SURFACES	FUNGI-10 SUPPLY VENT	AIR SAMPLE	SWAB/TAPE	MISC (Questionnaire Data)	
	1ST FLOOR ROOF OUTDOORS (1-H)	Outdoor level: 4230	N/A ▾	N/A ▾	Control Sample ▾	N/A ▾	Number of Individuals with Health Effects: NA	
		PHOTOS:	Outdoor Photos					
		VISUALS:						
FIRST FLOOR	ROOM	PARTICLE DENSITIES	FUNGI-10 SURFACES	FUNGI-10 SUPPLY VENT	AIR SAMPLE	SWAB/TAPE	MISC (Questionnaire Data)	
	COURT ROOM 1B (1-B)	4,680 Outdoor level: 4230	Unacceptable ▾ Elevated Stachybotrys and other mycotoxins	Acceptable ▾	Unacceptable ▾ Elevated Cladosporium	N/A ▾	Number of Individuals with Health Effects: 10	
		PHOTOS:	Court Room 1B					
		VISUALS:	<ul style="list-style-type: none"> The courtroom has green carpet and an unspecified odor. Staining on the south wall near the entry to the judge's chamber. There is black buildup material on metal piping near the jury wall. Black particulates fell onto the bench seating from the courtroom supply vent on the south wall. No thermal imaging anomalies at the time of our investigation 					
FIRST FLOOR	ROOM	PARTICLE DENSITIES	FUNGI-10 SURFACES	FUNGI-10 SUPPLY VENT	AIR SAMPLE	SWAB/TAPE	MISC (Questionnaire Data)	
	Conference Room-Hallway Outside (1-Z)	4,590 Outdoor level: 4230	Unacceptable ▾ Elevated Stachybotrys	Acceptable ▾	Unacceptable ▾ Elevation of Aspergillus/ Penicillium and Cladosporium along with elevated total spore density.	N/A ▾	Number of Individuals with Health Effects: NA	
		PHOTOS:	Conference Room (1Z)					
		VISUALS:	<ul style="list-style-type: none"> Storage room with a conference table, has VCT tile Some small stains on ceiling tile and a bit of staining on floor near storage shelving Hallway has VCT tile and only minor ceiling stains No thermal imaging anomalies at the time of our investigation. 					

FIRST FLOOR	ROOM	PARTICLE DENSITIES	FUNGI-10 SURFACES	FUNGI-10 SUPPLY VENT	AIR SAMPLE	SWAB/TAPE	MISC (Questionnaire Data)
	MAIN ENTRANCE (1-Y)	6,390 Outdoor level: 4230	Potentially Unacceptable ▾ Slight elevation of Stachybotrys	Potentially Unacceptable ▾ Slight elevation of Stachybotrys and Chaetomium	Unacceptable ▾ Elevation of Aspergillus/ Penicillium and Cladosporium along with extremely elevated total spore density.	N/A ▾	Number of Individuals with Health Effects: NA
		PHOTOS:	Main entrance (1Y)				
		VISUALS:	<ul style="list-style-type: none"> • Black with white speckle commercial vinyl flooring with marble walls. • Some staining on ceiling tiles and rusting on supply vents • Large stairwell going up and down. • No thermal imaging anomalies at the time of our investigation. 				
FIRST FLOOR	ROOM	PARTICLE DENSITIES	FUNGI-10 SURFACES	FUNGI-10 SUPPLY VENT	AIR SAMPLE	SWAB/TAPE	MISC (Questionnaire Data)
	JURY ROOM FOR COURT 1B & CONNECTING HALLWAY (1-X)	4,890 Outdoor level: 4230	Unacceptable ▾ Elevated mycotoxins	Potentially Unacceptable ▾ Slight elevations of Stachybotrys and Chaetomium	Unacceptable ▾ Elevation of Aspergillus/ Penicillium and Cladosporium along with extremely elevated total spore density	N/A ▾	Number of Individuals with Health Effects: NA
		PHOTOS:	Jury room 1B (1X)				
		VISUALS:	<ul style="list-style-type: none"> • Some staining along the wall in the hallway. • Bathroom has some staining on the ceiling above the urinal and rust on the wall divider. • Some small dark spots on the supply vent in the jury room. • No thermal imaging anomalies at the time of our investigation. 				

SECOND FLOOR	ROOM	PARTICLE DENSITIES	FUNGI-10 SURFACES	FUNGI-10 SUPPLY VENT	AIR SAMPLE	SWAB/ TAPE	MISC (Questionnaire Data)	
	Courtroom 2A (2-A) (2-K)	2,730 Outdoor level: 4230	Unacceptable ▾ Elevation of Stachybotrys and other mycotoxins	Potentially Unacceptable ▾ Slight elevation of Stachybotrys	Acceptable ▾	N/A ▾	Number of Individuals with Health Effects: 13	
		PHOTOS:	Courtroom 2A					
		VISUALS:	<ul style="list-style-type: none"> Jury courtroom / high ceiling takes up two floors Green commercial carpeting Wood benches and partial wood paneling. North side of the building has four long vertical windows. Return vents are dusty and there are two on each side of the main entrance. Staining on dimensional lumber in vented areas below Windows, it appears that the dimensional lumber was wet at some point. No thermal imaging anomalies at the time of our investigation. 					

SECOND FLOOR	ROOM	PARTICLE DENSITIES	FUNGI-10 SURFACES	FUNGI-10 SUPPLY VENT	AIR SAMPLE	SWAB/ TAPE	MISC (Questionnaire Data)	
	Courtroom 2B (2-B) (2-L)	3,290 Outdoor level: 4230	Unacceptable ▾ Elevation of Stachybotrys, Chaetomium and other mycotoxins	Potentially Unacceptable ▾	Acceptable ▾	N/A ▾	Number of Individuals with Health Effects:12	
		PHOTOS:	Courtroom 2B					
		VISUALS:	<ul style="list-style-type: none"> Older green commercial carpeting. West wall has some staining that appears to have been cleaned. South wall under the projector screen has an evident drywall patch; also staining on that wall shows signs of past water. North side wall also has a dark running stain down ceiling tile near the transition to the East wall. The judge's room has ceiling tile staining near the supply vent path. Active infrared thermal anomaly on the East wall- see photo. 					

SECOND FLOOR	ROOM	PARTICLE DENSITIES	FUNGI-10 SURFACES	FUNGI-10 SUPPLY VENT	AIR SAMPLE	SWAB/TAPE	MISC (Questionnaire Data)	
	Courtroom 2C (2-C) (2-M)	4,380 Outdoor level: 4230	Unacceptable ▾ Extreme elevation of mycotoxin	Acceptable ▾	Unacceptable ▾ Elevated Aspergillus/ Penicillium	N/A ▾	Number of Individuals with Health Effects: 11	
		PHOTOS:	Courtroom 2C					
		VISUALS:	<ul style="list-style-type: none"> Green commercial carpeting and green VCT tile. North wall four windows. Judge's chamber had staining on floor carpeting, Terry mentioned from a planter the judge had. Meeting room before the judge's chamber had staining on carpeting near the window, similar to the judges room; both on the North wall. Meeting room near the judge's chamber has staining on the South wall. Northwest meeting room has moldy pattern on ceiling from supply vent, see pictures. Southwest meeting room with computer has staining on ceiling tile on West wall and staining on supply vent cover along with rust markings. Supply vent near the courtroom divider has staining that follows patterns of typical microbial growth. No thermal imaging anomalies at the time of our investigation. 					
SECOND FLOOR	ROOM	PARTICLE DENSITIES	FUNGI-10 SURFACES	FUNGI-10 SUPPLY VENT	AIR SAMPLE	SWAB/ TAPE	MISC (Questionnaire Data)	
	Jury Room for Courtrooms 2B & 2D (2-D) (2-N)	9,540 Outdoor level: 4230	Potentially Unacceptable ▾ Slight elevation of Chaetomium	Unacceptable ▾ Elevated mycotoxin	Unacceptable ▾ Extreme elevation of Aspergillus/ Penicillium	N/A ▾	Number of Individuals with Health Effects: 1	
		PHOTOS:	Jury Room					
		VISUALS:	<ul style="list-style-type: none"> VCT tile flooring. Woman's bathroom has ceiling staining and a dusty vent. Men's bathroom has a dusty vent. Main room with a large table and seating has two supply vents and the west vent has some rust. Chief judge's office has blue carpeting. Office behind that office has a ceiling air vent with unknown function. Some staining on the ceiling in that area. No thermal imaging anomalies at the time of our investigation. 					

SECOND FLOOR	ROOM	PARTICLE DENSITIES	FUNGI-10 SURFACES	FUNGI-10 SUPPLY VENT	AIR SAMPLE	SWAB/TAPE	MISC (Questionnaire Data)
	Judge's Office for Courtroom 2A (2E)	4,200 Outdoor level: 4230	Unacceptable ▾ Elevated Stachybotrys and other mycotoxins	Acceptable ▾	Potentially Unacceptable ▾ Slight elevations of Aspergillus/ Penicillium	N/A ▾	Number of Individuals with Health Effects: 1
		PHOTOS:	Judge's Office for Courtroom 2A				
		VISUALS:	<ul style="list-style-type: none"> • Terry mentioned carpeting was recently replaced. • Small rusting on ceiling tile in judge's office. • There is some visible surface staining on the west side cove base trim in the hall near the restroom. • Main office supply vent had staining with potential microbial growth with heavy dust levels. • Small stain on west side ceiling tile near supply and small markings on west wall. • No thermal imaging anomalies at the time of our investigation. 				

SECOND FLOOR	ROOM	PARTICLE DENSITIES	FUNGI-10 SURFACES	FUNGI-10 SUPPLY VENT	AIR SAMPLE	SWAB/TAPE	MISC (Questionnaire Data)
	Courtroom 2D (2-F)	3,990 Outdoor level: 4230	Unacceptable ▾ Extreme elevations of Stachybotrys and other mycotoxins	Acceptable ▾	Acceptable ▾	Unacceptable ▾ High levels of Aspergillus and Cladosporium	Number of Individuals with Health Effects: 12
		PHOTOS:	Courtroom 2D				
		VISUALS:	<ul style="list-style-type: none"> • New carpeting, new wall panels where the clock is located. • A strong odor is present in the room. • Ceiling tiles near new wood panels have stains near the ceiling mounted air unit. • Painted panels on the west lower are buckling. • Smell of ozone, but could not locate where the smell was coming from. • There are two wall bump outs where the fresh air intakes from the exterior are located. • Lots of new cosmetic finishes on surfaces of this room. • Dark markings on lower paneling near carpeting baseboard below new paneling. • Swab was performed on the paneled wall. • No thermal imaging anomalies at the time of our investigation. 				

SECOND FLOOR	ROOM	PARTICLE DENSITIES	FUNGI-10 SURFACES	FUNGI-10 SUPPLY VENT	AIR SAMPLE	SWAB/TAPE	MISC (Questionnaire Data)
	Small Jury Room 2G (2-G)(2-Q)	3,300 Outdoor level: 4230	Unacceptable - Elevated Mycotoxin	Unacceptable - Elevated Mycotoxin	Unacceptable - Elevated Aspergillus/ Penicillium	N/A -	Number of Individuals with Health Effects: 2
		PHOTOS:	Small Jury Room 2G				
		VISUALS:	<ul style="list-style-type: none"> • Very small room with green commercial carpeting • Both windows have newer caulking and exterior has new exterior cladding. • South wall has cove base trim coming off and appears to have microbial growth on the back side. • Door into the meeting room has a metal vent with visible rust. • Men's bathroom has ceiling tile staining. • Women's restroom ceiling tiles look newer. • No thermal imaging anomalies at the time of our investigation. 				

SECOND FLOOR	ROOM	PARTICLE DENSITIES	FUNGI-10 SURFACES	FUNGI-10 SUPPLY VENT	AIR SAMPLE	SWAB/TAPE	MISC (Questionnaire Data)
	Law Library (2-H) (2-R)	4,980 Outdoor level: 4230	Unacceptable - Elevation of Stachybotrys and other mycotoxins	Unacceptable - Elevated mycotoxins	Unacceptable - Extreme elevations of Aspergillus/ Penicillium, Cladosporium and extremely elevated total spore density	N/A -	Number of Individuals with Health Effects: 11
		PHOTOS:	Law Library				
		VISUALS:	<ul style="list-style-type: none"> • Blue/gray commercial carpeting appears to be old with a lot of staining. • 3 windows on the West wall, some with signs of peeling paint. • Small office that is very clean has new carpeting, has an air purifier, and covered ceiling vent. • East wall has staining from the ceiling. • Noted that inmates are right above this room, lots of times this room received staining from overflowing of toilets above mentioned by Terry. • Two large supply vents appear to have microbial growth. • Women's restroom has staining on the ceiling tile. • Room where restrooms are located has several ceiling tiles with staining. • No thermal imaging anomalies at the time of our investigation. 				

SECOND FLOOR	ROOM	PARTICLE DENSITIES	FUNGI-10 SURFACES	FUNGI-10 SUPPLY VENT	AIR SAMPLE	SWAB/TAPE	MISC (Questionnaire Data)	
	Storage Area (2-Z)	4,710 Outdoor level: 4230	Unacceptable - Extreme elevations of Stachybotrys and other mycotoxins.	N/A -	Acceptable -	N/A -	Number of Individuals with Health Effects: NA	
		PHOTOS:	Storage (2Z)					
		VISUALS:	<ul style="list-style-type: none"> • concrete flooring painted • Area is abandoned and used for storage for furniture. • Some staining on the ceiling around the vent and microbial growth is present around the un- insulated pipe. 					

SECOND FLOOR	ROOM	PARTICLE DENSITIES	FUNGI-10 SURFACES	FUNGI-10 SUPPLY VENT	AIR SAMPLE	SWAB/TAPE	MISC (Questionnaire Data)
	Air Handler Near Judge's Office (2-M)	NA	N/A -	N/A -	Acceptable -	N/A -	Number of Individuals with Health Effects: NA
		PHOTOS:	Judges (3K) Air Handler				

THIRD FLOOR	ROOM	PARTICLE DENSITIES	FUNGI-10 SURFACES	FUNGI-10 SUPPLY VENT	AIR SAMPLE	SWAB/TAPE	MISC (Questionnaire Data)	
	Public Defender's Office (formerly Sheriff's Office (3-A) (3-G))	6,090 Outdoor level: 4230	Unacceptable - Elevation of Stachybotrys, Chaetomium and other mycotoxins		Acceptable -	Potentially Unacceptable - Slight elevation of Aspergillus/ Penicillium	N/A -	Number of Individuals with Health Effects: 11
		PHOTOS:	Public Defenders Office					
		VISUALS:	<ul style="list-style-type: none"> • Blue commercial carpet. • Chief public defender office is on the West end. • Some ceiling staining throughout this area. • The east office has visibly dusty vents.. • Entrance office, two open windows on south wall pushing air into office. • Bathroom vent cover is missing and looks dirty. 					

THIRD FLOOR	ROOM	PARTICLE DENSITIES	FUNGI-10 SURFACES	FUNGI-10 SUPPLY VENT	AIR SAMPLE	SWAB/TAPE	MISC (Questionnaire Data)	
	Courtroom 3A (3-B) (3-H)	5,070 Outdoor level: 4230	Unacceptable ▾ Elevation of Stachybotrys, Chaetomium and other mycotoxins	Accept... ▾	Unacceptable ▾ Extreme elevations of Aspergillus/ Penicillium, Cladosporium and extremely elevated total spore density	Unacceptable ▾ High elevations of Aspergillus	Number of Individuals with Health Effects: 6	
		PHOTOS:	Courtroom 3A					
		VISUALS:	<ul style="list-style-type: none"> ● Green commercial carpeting ● North side walls show some signs of moisture coming down from the ceiling near bump out. ● Small room on the Northeast wall has some apparent ceiling tiles replaced. ● Small room on the Southeast wall has a window to the exterior, lots of wear below and is peeling. We lifted the peeling wallpaper and it shows signs of microbial growth on the backside. Tape test was performed. ● No thermal imaging anomalies at the time of our investigation. 					

THIRD FLOOR	ROOM	PARTICLE DENSITIES	FUNGI-10 SURFACES	FUNGI-10 SUPPLY VENT	AIR SAMPLE	SWAB/TAPE	MISC (Questionnaire Data)	
	Judge's Office (3-D) (3-J)	3,630 Outdoor level: 4230	Unacceptable ▾ Elevated mycotoxin	Unacceptable ▾ Elevated mycotoxin	Unacceptable ▾ Extreme elevations of Aspergillus/ Penicillium, Cladosporium and extremely elevated total spore density	Unacceptable ▾ Elevations of Chaetomium in Judge Wooleyman's Closet and elevations of Cladosporium in the meeting room window.	Number of Individuals with Health Effects: 2	
		PHOTOS:	Judge's Office					
		VISUALS:	<ul style="list-style-type: none"> ● Green carpeting tile is about 7 years old, according to Terry. ● Swab taken from window area. ● The framing around the South office window has past water damage as the material is soft to the touch. ● Supply vent is covered with plastic. ● The North side has evidence of peeling paint likely caused by high moisture levels in the air. ● Tape test done on/near chair rail trim below peeling paint in closet. 					

			<ul style="list-style-type: none"> • Air purifier in judge's office. • No thermal imaging anomalies at the time of our investigation 					
THIRD FLOOR		PARTICLE DENSITIES	FUNGI-10 SURFACES	FUNGI-10 SUPPLY VENT	AIR SAMPLE	SWAB/TAPE	MISC (Questionnaire Data)	
	Large Left Washroom/Jail (3-E) (3-K)	5,160 Outdoor level: 4230	Unacceptable ▾ Extreme elevations of Stachybotrys, Chaetomium and other mycotoxins.	Unacceptable ▾ Elevations of Stachybotrys, Chaetomium and extreme elevations of other mycotoxins.	Acceptable ▾	Potentially Unacceptable ▾ Elevations of Cladosporium on the bunk room ceiling and Janitor's closet	Number of Individuals with Health Effects: NA	
		PHOTOS:	Large Left Washroom/Jail					
		VISUALS:	<ul style="list-style-type: none"> • Section 6 dorm room, south wall ceiling has some signs of microbial growth. • Tape test on section 6 janitor closet. • Men's area and rest of old jail not in use for 3 years • No thermal imaging anomalies at the time of our investigation. 					
THIRD FLOOR	ROOM	PARTICLE DENSITIES	FUNGI-10 SURFACES	FUNGI-10 SUPPLY VENT	AIR SAMPLE	SWAB/TAPE	MISC (Questionnaire Data)	
	Long Interior Hallway/Juvenile Court Waiting Room (3-F) (3-L)	4,500 Outdoor level: 4230	Unacceptable ▾ Elevations of Stachybotrys, Chaetomium and other mycotoxins	Acceptable ▾	Unacceptable ▾ Extreme elevations of Aspergillus/ Penicillium, Cladosporium and extremely elevated total spore density	N/A ▾	Number of Individuals with Health Effects: NA	
		PHOTOS:	Long Interior Hallway					
		VISUALS:	<ul style="list-style-type: none"> • Hallway has dark commercial vinyl flooring. • Some staining on ceiling tiles that trends toward the center of the ceiling tile. • Juvenile waiting room has gray carpet tile and old ceiling tiles. • The north side of the waiting area has a soffit with signs of moisture damage coming from the soffit and ceiling tile framing shows rust and wear. • No thermal imaging anomalies at the time of our investigation. 					

THIRD FLOOR	ROOM	PARTICLE DENSITIES	FUNGI-10 SURFACES	FUNGI-10 SUPPLY VENT	AIR SAMPLE	SWAB/TAPE	MISC (Questionnaire Data)	
	Front Right 2nd Floor Roof (3-H)		N/A ▾	Acceptable ▾	Control Sample ▾	N/A ▾	Number of Individuals with Health Effects: NA	
		PHOTOS:	Outdoor Photos					
THIRD FLOOR	ROOM	PARTICLE DENSITIES	FUNGI-10 SURFACES	FUNGI-10 SUPPLY VENT	AIR SAMPLE	SWAB/TAPE	MISC (Questionnaire Data)	
	Air Handler Mechanical Room (2-J)		N/A ▾	N/A ▾	Acceptable ▾	N/A ▾	Number of Individuals with Health Effects: NA	
THIRD FLOOR	ROOM	PARTICLE DENSITIES	FUNGI-10 SURFACES	FUNGI-10 SUPPLY VENT	AIR SAMPLE	SWAB/TAPE	MISC (Questionnaire Data)	
	3rd Floor Jail Gate Air Handler (3-I)		N/A ▾	N/A ▾	Unacceptable ▾ Elevations of Aspergillus/ Penicillium, Chaetomium, Cladosporium and total spore densities.	N/A ▾	Number of Individuals with Health Effects: NA	
		PHOTOS:	Jail gate (3I) Air Handler					
THIRD FLOOR	ROOM	PARTICLE DENSITIES	FUNGI-10 SURFACES	FUNGI-10 SUPPLY VENT	AIR SAMPLE	SWAB/TAPE	MISC (Questionnaire Data)	
	Judge's Area Air Handler (3-K)		N/A ▾	N/A ▾	Unacceptable ▾ Elevations of Aspergillus/ Penicillium, Cladosporium and total spore densities.	N/A ▾	Number of Individuals with Health Effects: NA	
		PHOTOS:	Judges (3K) Air Handler					

FOURTH FLOOR	ROOM	PARTICLE DENSITIES	FUNGI-10 SURFACES	FUNGI-10 SUPPLY VENT	AIR SAMPLE	SWAB/TAPE	MISC (Questionnaire Data)	
	Left Jail Area (4-A) (4-E)	4,860 Outdoor level: 4230	Unacceptable ▾ Elevations of Stachybotrys, Chaetomium and other mycotoxins	Unacceptable ▾ Elevations of Stachybotrys, Chaetomium and other mycotoxins	Unacceptable ▾ Elevations of Aspergillus/ Penicillium, Cladosporium and total spore densities.	Unacceptable ▾ Elevated levels of Aspergillus and Cladosporium	Number of Individuals with Health Effects: NA	
		PHOTOS:	4th Floor Photos					
		VISUALS:	<ul style="list-style-type: none"> • Empty jail cells, VCT tile • Tape test performed in the old visitation area. • Signs of moisture everywhere and rooftop air handling units distribute air through this area. These units were not on and have not been in use since the new jail opened. 					

FOURTH FLOOR	ROOM	PARTICLE DENSITIES	FUNGI-10 SURFACES	FUNGI-10 SUPPLY VENT	AIR SAMPLE	SWAB/TAPE	MISC (Questionnaire Data)	
	Right Jail Area (4-B) (4-F)	4,860 Outdoor level: 4230	Unacceptable ▾ Elevations of Stachybotrys, Chaetomium and other mycotoxins	Unacceptable ▾ Elevated mycotoxins	Unacceptable ▾ Elevations of Aspergillus/ Penicillium, Cladosporium and total spore densities.	N/A ▾	Number of Individuals with Health Effects: NA	
		PHOTOS:	4th Floor Photos					
		VISUALS:	<ul style="list-style-type: none"> • Empty jail cells, VCT tile • Tape test done in old visitation room done • Signs of moisture everywhere and rooftop air handling units distribute air through this area. These units were not on and have not been in use since the new jail. 					

FOURTH FLOOR	ROOM	PARTICLE DENSITIES	FUNGI-10 SURFACES	FUNGI-10 SUPPLY VENT	AIR SAMPLE	SWAB/TAPE	MISC (Questionnaire Data)	
	Front Jail Hallway 4C	4,860 Outdoor level: 4230	Unacceptable ▾ Elevations of Stachybotrys, Chaetomium and other mycotoxins	N/A ▾	Unacceptable ▾ Elevations of Aspergillus/ Penicillium, Cladosporium, Stachybotrys and total spore densities.	N/A ▾	Number of Individuals with Health Effects: NA	
		PHOTOS:	4th Floor Photos					
		VISUALS:	<ul style="list-style-type: none"> • Same as above 4A/4B as this area is interconnected. • No thermal imaging anomalies at the time of our investigation. 					

FOURTH FLOOR	ROOM	PARTICLE DENSITIES	FUNGI-10 SURFACES	FUNGI-10 SUPPLY VENT	AIR SAMPLE	SWAB/TAPE	MISC (Questionnaire Data)	
	Kitchen Storage Area (4-D) (4-H)	4,850 Outdoor level: 4230	Unacceptable ▾ Extreme elevations of Stachybotrys, Chaetomium and other mycotoxins	Unacceptable ▾ Elevations of Stachybotrys, Chaetomium and other mycotoxins	Unacceptable ▾ Elevations of Aspergillus/ Penicillium, Cladosporium and total spore densities.	Unacceptable ▾ Shelf above freezer: Elevated levels of Penicillium/Talaromyces and Freezer area: Elevated levels of Cladosporium	Number of Individuals with Health Effects: #	
		PHOTOS:	4th Floor Photos					
		VISUALS:	<ul style="list-style-type: none"> • Empty area, VCT tile • This area houses three air handling units behind kitchen • This area has a large amount of visible microbial growth. • Tape test on freezers with microbial growth. • No thermal imaging anomalies at the time of our investigation. 					

FOURTH FLOOR	ROOM	PARTICLE DENSITIES	FUNGI-10 SURFACES	FUNGI-10 SUPPLY VENT	AIR SAMPLE	SWAB/TAPE	MISC (Questionnaire Data)
	Elevator Equipment Room (4-Z)		Unacceptable ▾ Elevated Stachybotrys and other mycotoxins	N/A ▾	N/A ▾	N/A ▾	Number of Individuals with Health Effects: #
		PHOTOS:	4th Floor Photos				

FOURTH FLOOR	ROOM	PARTICLE DENSITIES	FUNGI-10 SURFACES	FUNGI-10 SUPPLY VENT	AIR SAMPLE	SWAB/TAPE	MISC (Questionnaire Data)
	Air Handler 1	NA	N/A ▾	N/A ▾	Unacceptable ▾ Elevations of Aspergillus/ Penicillium, Cladosporium, Stachybotrys and total spore densities.	N/A ▾	Number of Individuals with Health Effects: #
		PHOTOS:	4th Floor Air Handler 1				

FOURTH FLOOR	ROOM	PARTICLE DENSITIES	FUNGI-10 SURFACES	FUNGI-10 SUPPLY VENT	AIR SAMPLE	SWAB/TAPE	MISC (Questionnaire Data)
	Air Handler 2	NA	N/A ▾	N/A ▾	Unacceptable ▾ Elevations of Aspergillus/ Penicillium, Cladosporium, Stachybotrys and total spore densities.	N/A ▾	Number of Individuals with Health Effects: NA
		PHOTOS:	4th Floor Air Handler 2				

FOURTH FLOOR	ROOM	PARTICLE DENSITIES	FUNGI-10 SURFACES	FUNGI-10 SUPPLY VENT	AIR SAMPLE	SWAB/TAPE	MISC (Questionnaire Data)
	Air Handler 3	NA	N/A ▾	N/A ▾	Acceptable ▾	N/A ▾	Number of Individuals with Health Effects: NA
		PHOTOS:	4th Floor Air Handler 3				

FOURTH FLOOR	ROOM	PARTICLE DENSITIES	FUNGI-10 SURFACES	FUNGI-10 SUPPLY VENT	AIR SAMPLE	SWAB/TAPE	MISC (Questionnaire Data)
	Air Handler 4	NA	N/A ▾	N/A ▾	Acceptable ▾	N/A ▾	Number of Individuals with Health Effects: NA
		PHOTOS:	4th Floor Air Handler 4				

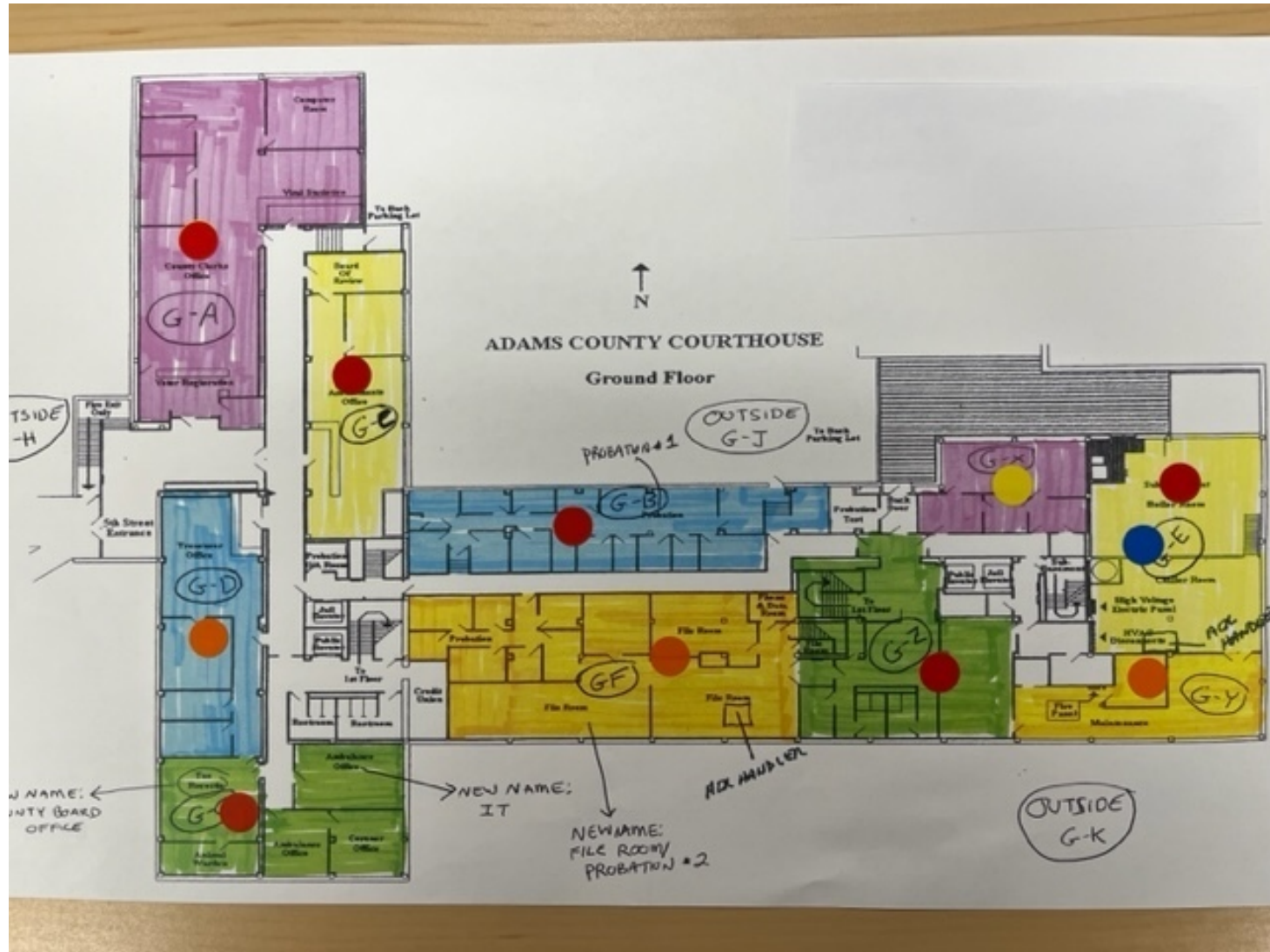
STATISTICAL CONCERNS AND CONSIDERATIONS

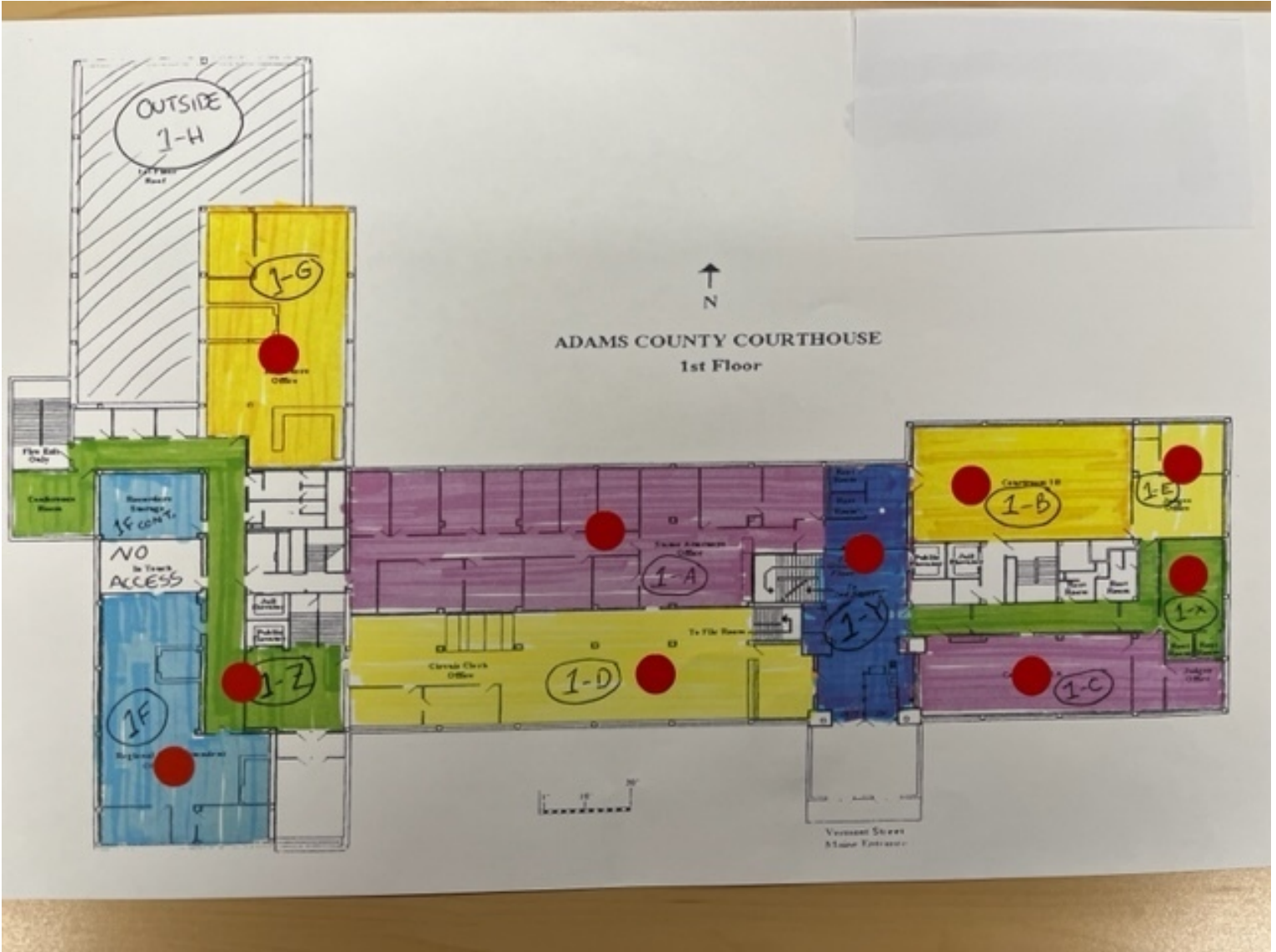
Due to the limited scope of this project, in terms of “total affected area”, in addition to efforts made to provide a cost-effective service and comprehensive investigation for all affected parties, the number of samples taken were decided based, in large part, upon the above-mentioned Concepts & Methodologies and specific understanding of related events. This approach was coupled with an understanding of the building’s history and physical layout to help produce the most representative results. The laboratory findings for this report are limited to only those specific areas sampled in the building at the time of the assessment. Any inferences based off of these findings are done so using both the above-listed “Concepts & Methodologies”, in addition to the visual assessment findings and building history information provided by the involved parties.

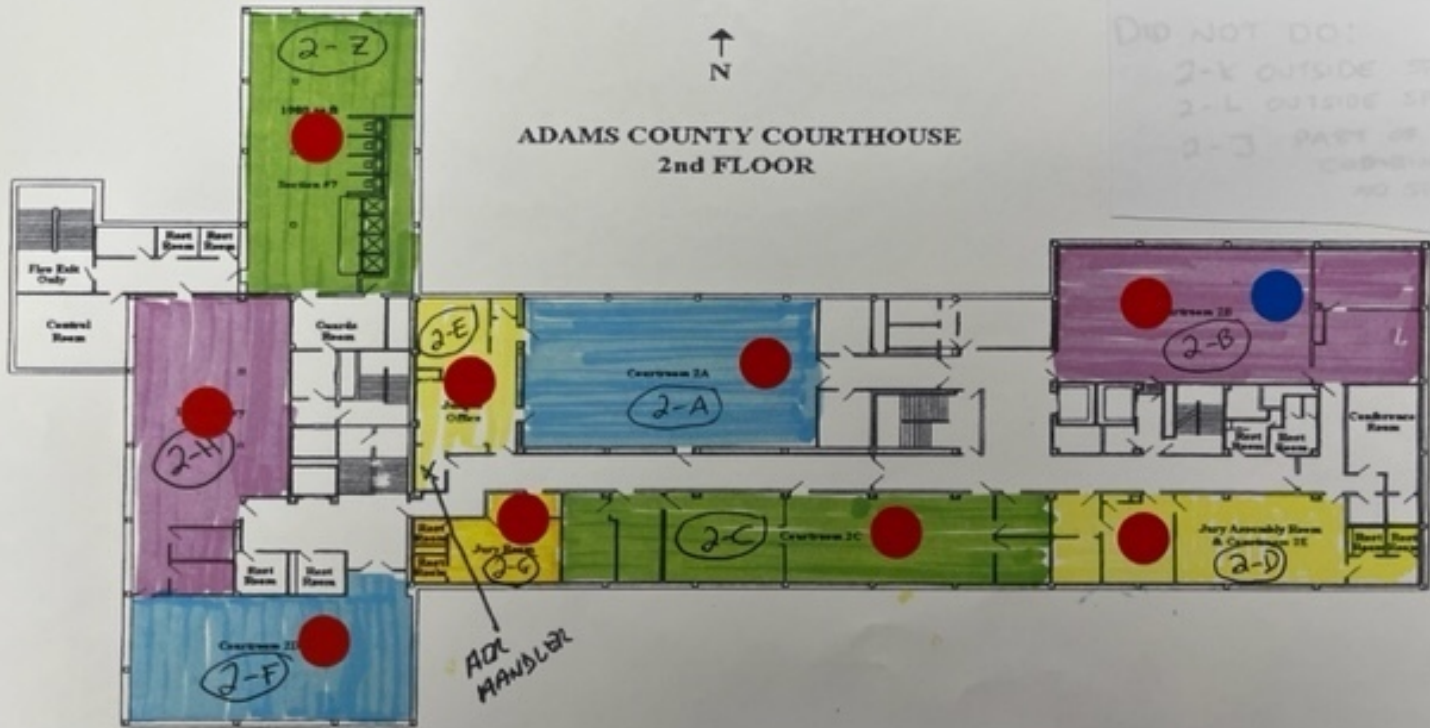
After reviewing this document, please email general@safestartiaq.com to schedule a follow up consultation to review your report and discuss any questions you may have.

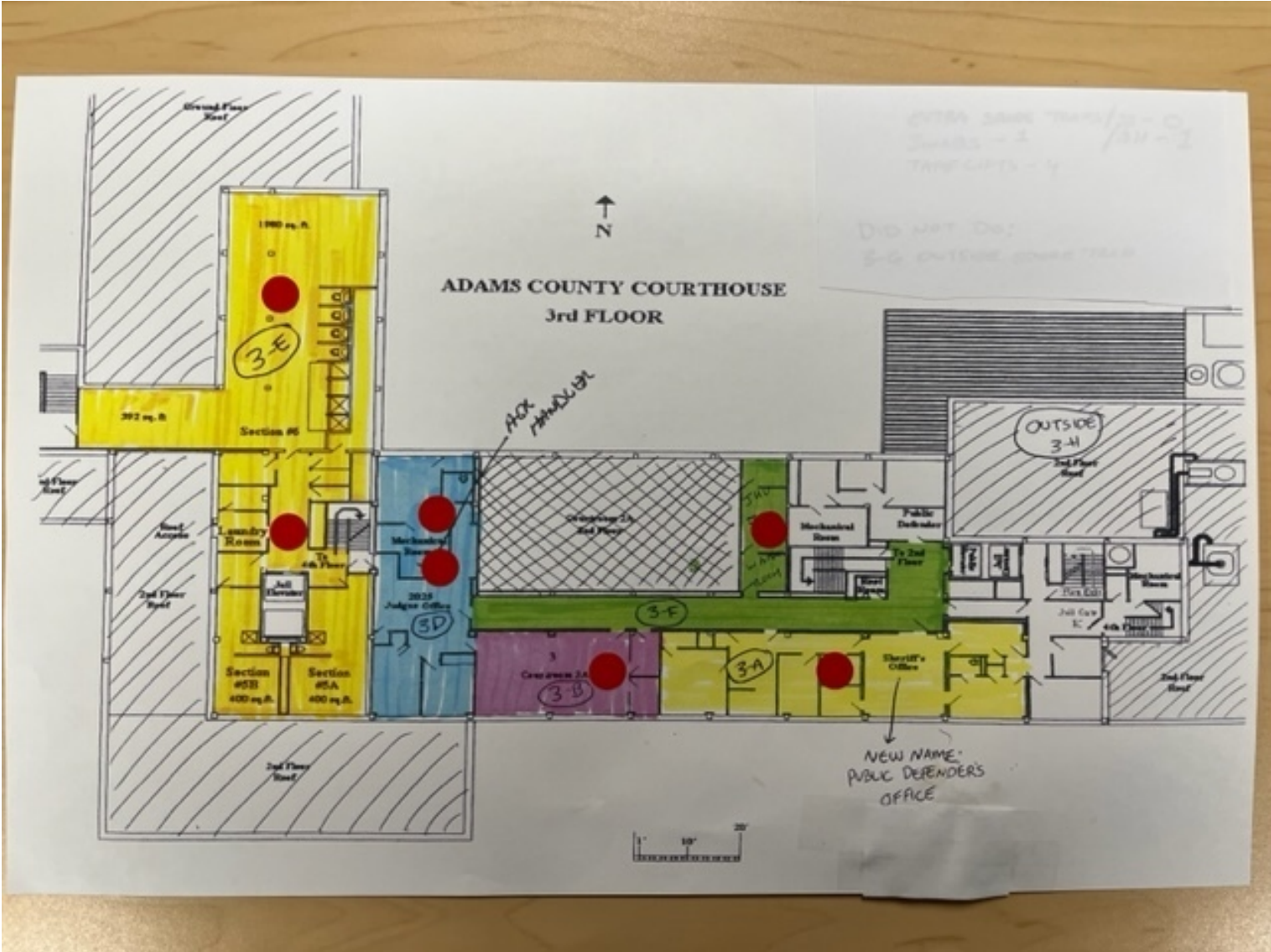
Copyright © Safestart Environmental May 2023, Lawrence A. Schwartz

The protocols and proprietary information that have been shared with you are for your sole use only. Any distribution of this information without prior written approval is strictly prohibited

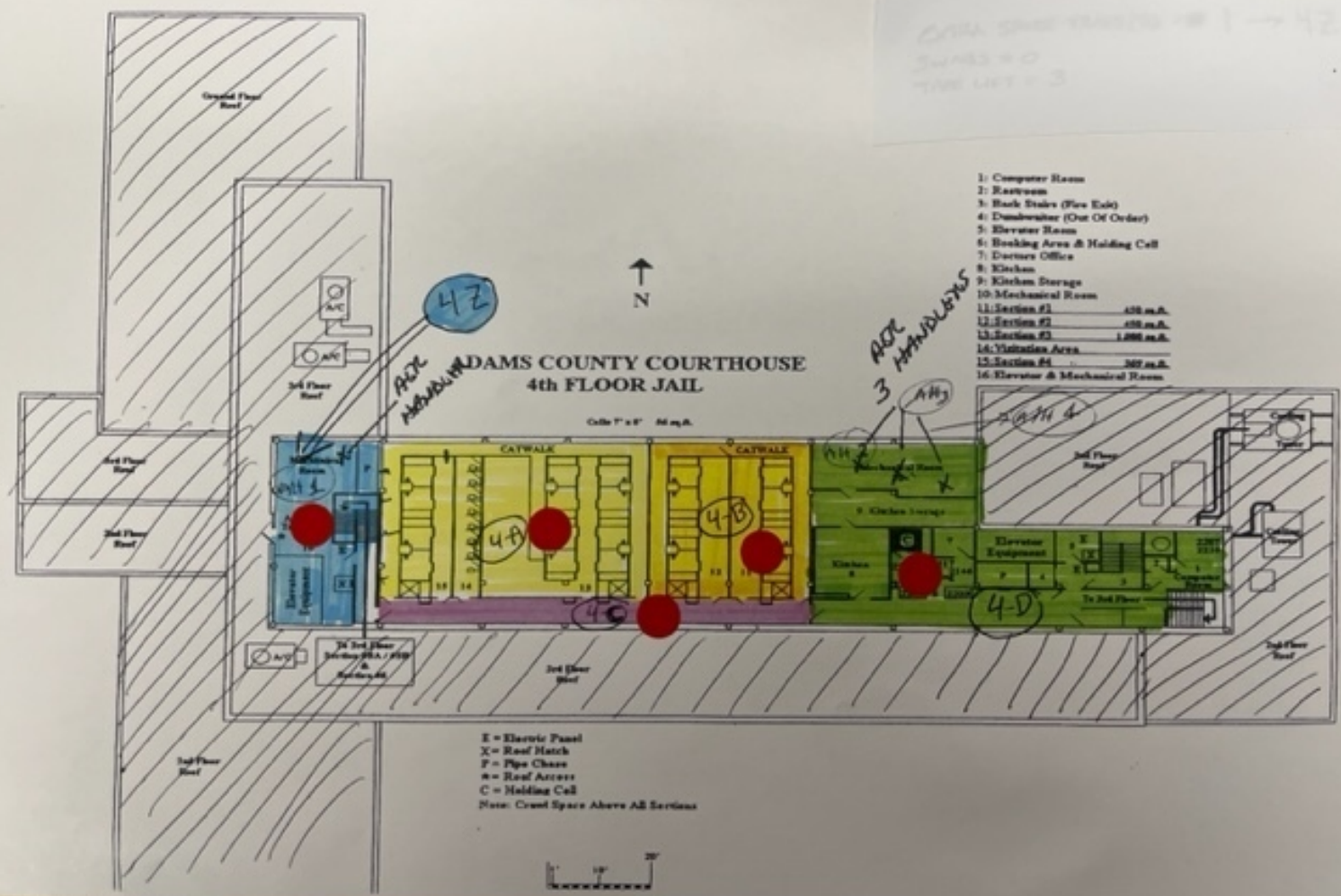








CRIMINAL JUSTICE - 1 - 42
 SWMS = 0
 TIME LIST = 3



- 1: Computer Room
- 2: Restroom
- 3: Back Stairs (Fire Exit)
- 4: Dumbwaiter (Out Of Order)
- 5: Elevator Room
- 6: Booking Area & Holding Cell
- 7: Doctors Office
- 8: Kitchen
- 9: Kitchen Storage
- 10: Mechanical Room
- 11: Section #1 - 450 sq.ft.
- 12: Section #2 - 450 sq.ft.
- 13: Section #3 - 1,000 sq.ft.
- 14: Visitation Area
- 15: Section #4 - 300 sq.ft.
- 16: Elevator & Mechanical Room

E = Electric Panel
 X = Roof Hatch
 F = Pipe Chase
 m = Roof Access
 C = Holding Cell
 Note: Create Space Above All Sections

